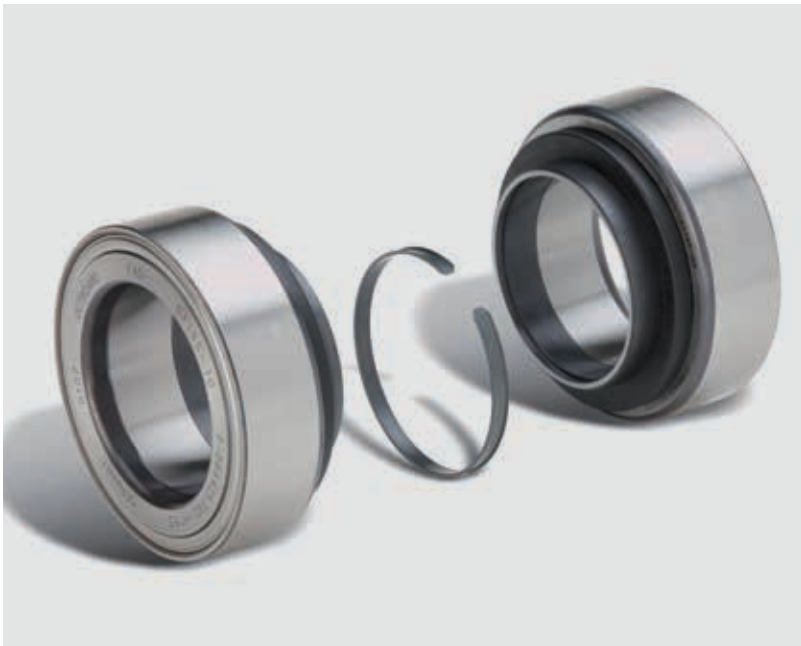


# MULTISPARES

## FAG

### Repair Insert Units for VOLVO, DAF and SAF axles



- Pre-assembled, pre-lubricated and pre-sealed
- Easy, trouble free installation
- Extended operating life (~1,000,000 kms)
- Lower whole of life cost

Also available from **MULTISPARES**  
for all Bus, Truck & Trailer applications

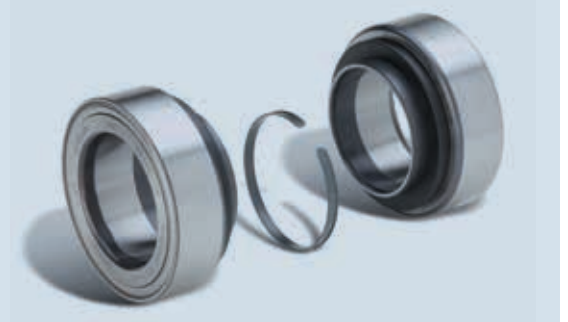
- Tapered Roller Bearings
- Insert Units
- Truck Axle Modules
- Truck Hub Units

Parts  
Hotline

13 16 15



# The FAG Repair Insert Unit (RIU) is the best value-for-money repair solution for Bus, Truck & Trailer wheel hubs.



	Insert Unit (IU)	Repair Insert Unit (RIU)
Product	<p>The Insert Unit is a development of the standard tapered roller bearing consisting of individual components making up the Inboard and Outboard bearings.</p> <p>The operating life of conventional Insert Units can be considerably less than that of FAG Repair Insert Units because:</p> <ul style="list-style-type: none"> <li>• Insert Units are not pre-mounted or pre-lubricated, and</li> <li>• Assembly, lubrication and sealing is done during installation.</li> </ul>	<p>The Repair Insert Unit (RIU) is a further development in both technology and quality of the Insert Unit (IU).</p> <p>The operating life of a Repair Insert Unit (RIU) is approximately 1,000,000 km because it is:</p> <ul style="list-style-type: none"> <li>• Pre-assembled</li> <li>• Pre-lubricated with the correct special grease that is heat-resistant and has optimum characteristics</li> <li>• Pre-sealed keeping the grease inside the bearing and protecting the bearing against dirt penetration</li> <li>• Ready to install</li> </ul>
Installation	<p>The mounting process is error prone, due to the loose components that need to be assembled, lubricated and sealed. Installation time is up to 30 minutes longer for an Insert Unit (IU) compared to a Repair Insert Unit (RIU).</p>	<p>Easy, trouble-free and faster mounting. A special tool is delivered with the product. Due to the universal design, one type of Repair Insert Unit (RIU) fits a wide range of commercial vehicle wheel hubs.</p>
Price	<p>The Insert Unit (IU) is the most inexpensive repair solution but with certain disadvantages.</p>	<p>The Repair Insert Unit offers similar life advantages to Truck Axle Modules (TAM) but at a dramatically lower cost and with improved environmental outcomes because the existing hub can be reused.</p>