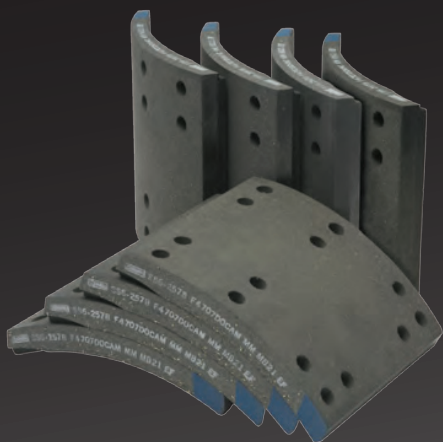


CARLISLE

/// Brake & Friction

Milestone MB-21

An innovative brake lining designed to reduce overall brake maintenance costs in a wide range of truck and trailer applications.



Carlisle's family of Milestone brake linings represents the industry's highest quality premium grade friction materials. Milestone MB-21 is a technologically advanced lining formulation designed to address fleet demands for brake linings that provide a longer service life with excellent drum compatibility.

MB-21 Lined Shoes available from

MULTISPARES

**Parts
Hotline**

13 16 15

Milestone MB-21

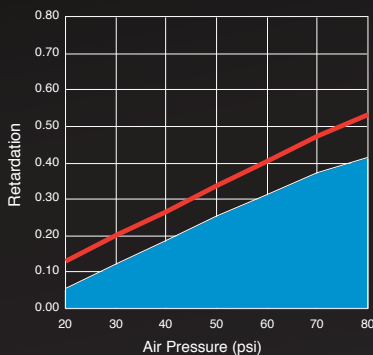
As the test results below indicate, MB-21 easily meets the Federal USA regulations for brake effectiveness, fade and recovery in accordance with the F.M.V.S.S. #121 inertia dynamometer test procedure. MB-21 passes these tests with comfortable margins using a 5.5" slack adjuster, as opposed to a 6" arm length. This makes MB-21 suitable for both truck and trailer brake systems.

MB-21 shows a highly desirable flat performance curve in both brake fade and recovery, a result of the excellent heat dissipation properties of the lining that allows it to perform repeated stops without losing effectiveness. In testing against competitive linings, MB-21 significantly outperforms all comparable linings in the vital stopping power category.

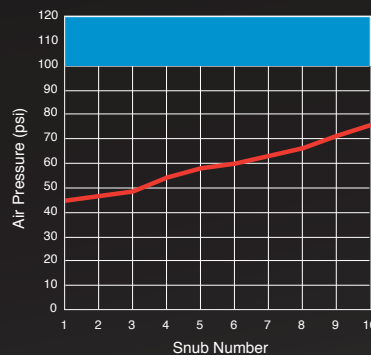
MB-21 Features

- The longest service life of any brake lining in its class
- Excellent brake fade and recovery characteristics
- Dependable stopping performance
- Carlisle product certification
- Excellent drum compatibility

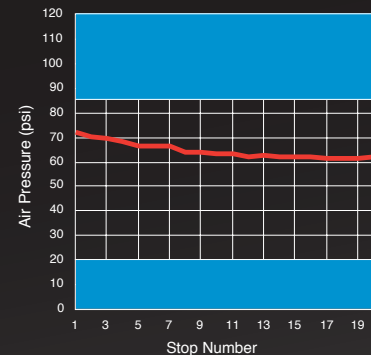
Effectiveness



Power



Recovery



Testing conducted in accordance with F.M.V.S.S. #121 criteria @ 20,000# axle load: 16 1/2" x 7" S-cam air brake; 30 x 5.5" input power; and a 20.8" tire rolling radius. Shaded area indicates non-compliance



13 16 15

